

Nuru Nigeria is a local NGO with affiliates in the US, Kenya, and Ethiopia. Our mission is to build resilience corridors of strong, locally owned farmer cooperatives driving profitable livelihoods in vulnerable communities of the Northeast. Nuru Nigeria prioritizes the smallholder farmers it serves and works to cultivate lasting meaningful choices through community-led, community-driven and community-sustained livelihood projects across the agriculture value chain.

Nuru Nigeria was established in 2018 to help Nigerian farmers and their families lift themselves out of extreme poverty by helping farmers move from subsistence to building thriving farmer-owned and farmer-led cooperatives. Nuru believes that the best solutions to fighting extreme poverty comes from the local community, and we are a 100% locally-led organization with locally-designed solutions built for driving long-term positive impact for our farmers.

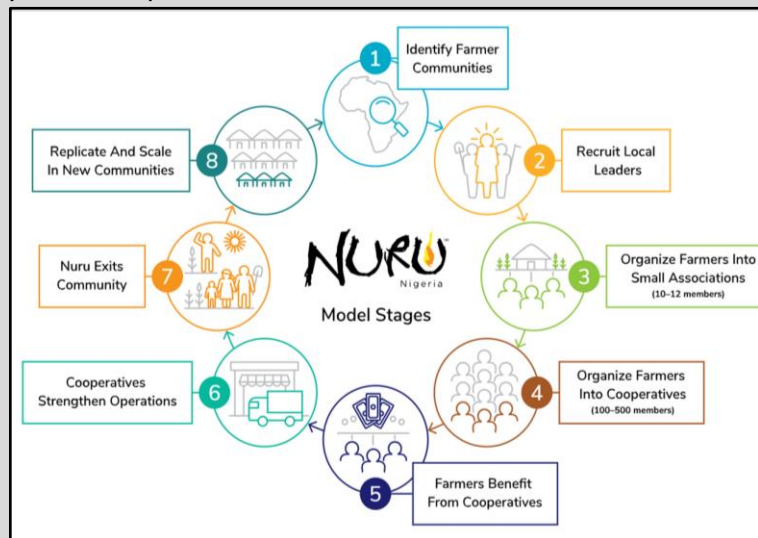


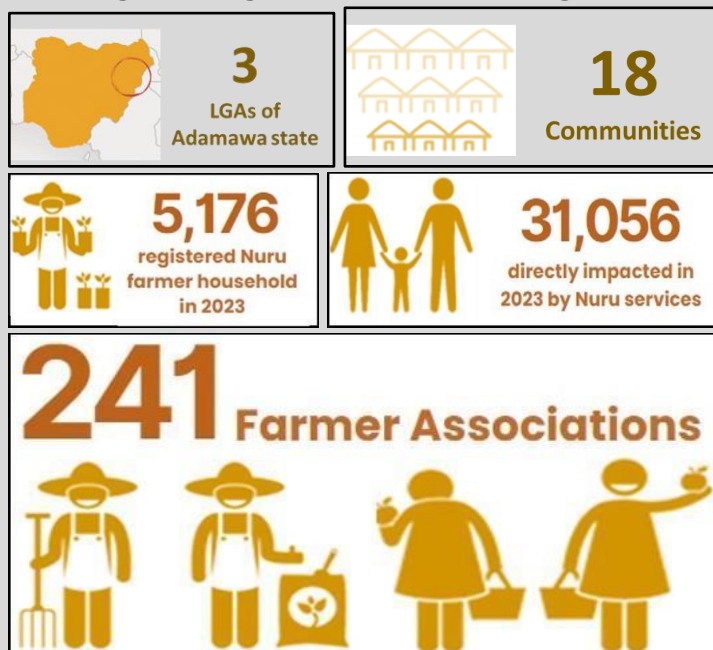
Figure 1: Nuru Nigeria Model

In the first stage of its model, Nuru Nigeria works with farmers in self-selected groups of 15-25 forming farmer associations, who then come together to form farmer organisations (100 - 250 individuals), which serve as agribusiness multi-purpose cooperatives.

Nuru Nigeria engages in organisational capacity development of the farmer associations and farmer organisations, with training and coaching targeted to the needs at each stage of their development.

Nuru Nigeria also provides input financing, processing equipment, financial inclusion, youth enterprise activities and other programs using the farmer cooperative as a vehicle; this is to promote community ownership and program sustainability.

## Nuru Nigeria Program locations and targets



## Summary of Program Impact on Nuru Nigeria Core Activities

Overall, through our funding partners, Nuru Nigeria's programming was able to achieve:

- Increase in crop yield by 121% and 79% increase in adoption of modern farming technologies
- Increase in household income by over 65%.
- Increased women participation in Agriculture, leadership and Financial activities in household financial management as women form 70% of Nuru Nigeria's program.
- Improved saving habits, access to safe and affordable financial services over NGN 35,000,000 generated for savings and loan activities.
- 21 Secondary Cooperatives registered with the state government and are able to engage in profitable business activities.
- Processing equipments distributed across secondary cooperatives to ensure income diversification and community sustainability

### Input on Credit Activity and Input Distribution

Nuru Nigeria successfully distributed crop packages during the challenging season in the 2023 farming season. Crop package distribution is a vital and exciting part of programming. This is the fulfillment of months of

training, preparation, and expectation, and it is brimming with potential for the future. In May 2023, **5,176** Nuru Nigeria farmers across **241 farmer associations** in all communities of intervention received crop packages (seeds, seeds treatment for groundnut package, and inoculant for soybean package).

These crop packages are high-yielding crop varieties well suited for the climate and soil type peculiar to each area of intervention based on research.

The timing of the distribution of these crop packages demanded a new level of operations in our work: a mix of survival, adaptation, co-creation, and resilience.



Figure 2: FA members receiving groundnut and soybean loan packages

To increase farmers' resilience, improve productivity, and reduce the vulnerability of farmers to climate-related risks, climate advisory services and e-extension messages are sent to farmers through one of the best weather advisory service companies in west Africa (Ignitia). These messages are tailored advice to help farmers make informed decisions about crop selection, planting and harvesting schedules, water management, pest control, and other agricultural practices

Nuru Nigeria has registered its farmers into **21 farmer cooperatives** (FOs) that are locally owned and sustained by the smallholder farmers with the **Ministry of Entrepreneurship in Adamawa state**. This registration with the government offers the FOs legality, credibility and positioning to explore opportunities, some of these Farmer cooperatives have already started drawing recognition and benefits, in form of grants directly from the Federal government (SMEDAN) to FOs for implementation of activities.



Figure 3: Distribution of Farmer Organization certificate to FO officials

### Stakeholder Partnership

Nuru Nigeria through its effort and commitment on program implementation is collaborating with other stakeholders: USAID, GIZ, ACT Foundation and Vitamin Angels to create a more robust and impactful program that addresses complex challenges more effectively for successful program implementation. This Collaboration with various stakeholders has brought about diverse expertise, resources, and perspectives in achieving program impact.



Figure 4: FO members receiving demo plot equipment package through the USAID BSL program activity



Figure 5: LGA Nutrition Focal persons receiving commodity for Pregnant women and Children under 5 through the Vitamin Angels in-kind grant



Figure 6: Nuru Nigeria receiving multi-crop threshers from GIZ to be distributed to farmer organizations

## Aggregation and Commercialization of Farmers Produce

This activity remains a core part of the NN agricultural program sequence and provides market linkage sources for the crops produced under the crop loan intervention package. Crops produced under the crop loan intervention include soybean for men and groundnuts for women in groups. The activity completes the end of the agricultural sequence which sees farmers receiving revenue for their products and equally making loan repayment to NN through their various groups.

The total volume aggregated from 2021 to 2023 for Soybean stands at **120,247.59 kg** while Groundnut volume aggregated is at **45,228.50 kg**. These aggregated volumes for both crops is worth **NGN 61,702,336.50** paid to the farmers and injected into the local economy.



Figure 7: Aggregation and commercialization of groundnut and soybean harvests

## Small Ruminants Distribution Activity

The small ruminant activity focuses on supporting vulnerable households with income generation and strengthening skills and knowledge on enterprise development activities. The activity majorly seeks to diversify household livelihood and to also engage those who do not often participate in crop production especially women due to socio-cultural factors and differences in livelihood practices.

The activity targeted **2,500 women** who received a Sheep each across the intervention communities, it also integrates adaptation of context specific changes into the NN program sequence to ensure community involvement and participation in NN programming for sustainability.



Figure 8: Recipient of Rams distributed through the GIZ, BC-RAD program activity

Nuru Nigeria Monitoring, Evaluation and Learning team conducted an outcome evaluation on the ram fattening activity among the women participants, and findings revealed that the activity was very impactful to the participants and the community at large. The participants' knowledge on ram fattening has tremendously increased with practice, they have more confidence in doing this for a business if given the chance by their spouses.

*“The most successful achievement of this activity is that most of the women have been empowered to start businesses ranging from animal fattening and other*

*petty businesses from the profit they made from ram fattening.” - Community leader*

*“One of the impacts this activity has on the participants and the community is that it has changed their perception of business and created the need to own a sustainable means of livelihood instead of depending on handouts from some other NGOs.” - Community Field Agent*

### Nutrition-Sensitive Activity

The household Nutrition program focused on promoting home gardening as a way of improving household food and nutrition security and dietary diversity through the production and consumption of nutrition-sensitive vegetable crops and increasing household income from sales of surpluses.



Figure 9: Fluted Pumpkin and cucumber home gardening

The household Nutrition program targeted the women groups to provide them with seeds and seedling packages of nutrition-sensitive crops such as **Tomato, Fluted Pumpkin, Okra, pepper, and cucumber**. The Nuru Impact team working in collaboration with the leadership team provided training to the participating members on the management of home gardening and raising of the seedlings of vegetable crops.

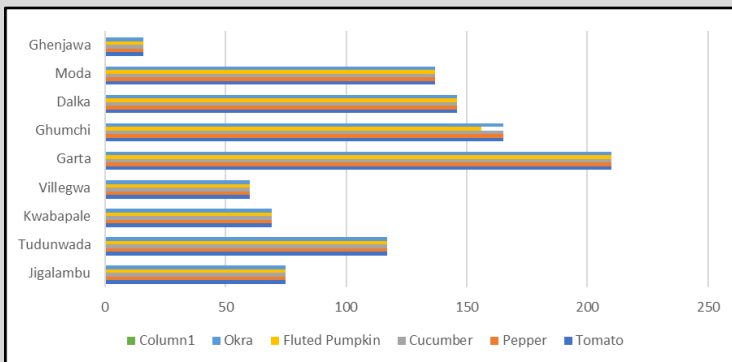


Figure 10: Nutrition seeds distribution in the communities where Nuru Nigeria is intervening in Michika LGA

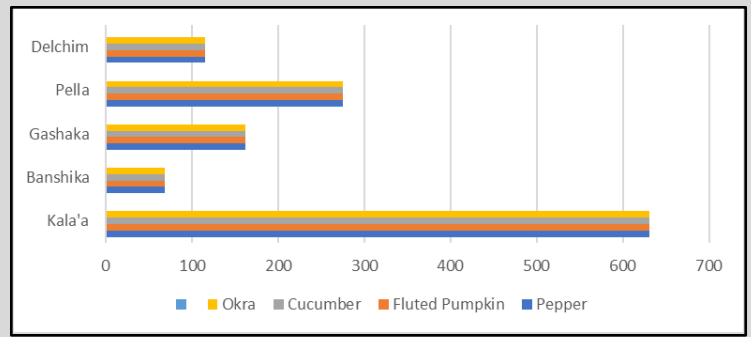


Figure 11: Nutrition seeds distribution in the communities where Nuru Nigeria is intervening in Hong LGA

### Crop Demonstration Plot Establishment and Extension Services

A good way of disseminating useful and practical information in agricultural intervention is through conducting effective demonstrations. Demonstration is adjudged to be the most commonly used technique by agriculturist and farmer trainers. Demonstration is a clear and practical presentation of production techniques in agriculture.

Nuru Nigeria uses a dual system of disseminating agricultural technologies and good practices to teach new skills to farmers' groups. The system involves both theoretical and practical demonstration teaching methods. The underlying principle is anchored on a learning theory that the greater the degree of active participation and sensory involvement by the farmers, the more effective learning will be.

The system has proven to be an effective method of presenting information based on the fact that adult and low-literate farmers learn faster and remember longer if they hear, see as well as practice what they have been taught.

The philosophy of the use of demonstration methods to promote the adoption of technologies is based on the fact that it rouses interest and improves adoption, because it is based on the principles of 'learning by doing' and 'believing by seeing'. To further promote adoption of agricultural good practice, Nuru Nigeria establishes demonstration plots in each cluster within its program communities for easy access and learning by the farmers. The system also integrates the result demonstration approach (RDA) where local and improved crop varieties are planted side by side and local and traditional practices are demonstrated side by side the improved practices and technologies to show why farmers need to adopt the good and improved practices and technologies. It is informally called 'seeing is believing'. The combination of these methods has increased adoption of good and improved practices

among farmers which saw the farmers recording more than **121% increase in yield from baseline in 2022**.



Figure 12: Groundnut and soybean demonstration farm in one of the communities

A total of **38 demonstration plots** were established in 2023 across 18 communities in the 3 LGA's where Nuru Nigeria is intervening- Michika, Hong and Gombi.

### Extension Services.

Nuru Nigeria also supports the agricultural training received by farmers on improved farming technologies at all stages of crop production stages (pre-planting, planting, crop management, harvest and post-harvest) with **“on the spot”** agricultural extension information. NN recognizes agricultural extension and advisory services play a crucial role in promoting agricultural productivity, increasing food security and income of farmers, which leads to improved livelihoods. Figure below shows the Nuru team providing advisory services to farmers on her farm.

After receiving extension services from Nuru Nigeria, Mary, a member of Nasara farmer association in Kwabapale, learned how to use fertilizer correctly and efficiently on her farmland and plough her land into ridges before planting her groundnuts – important practices in ensuring a good harvest. She encourages other farmers to use all the necessary training and services that Nuru Nigeria provides to increase their own yields.



Figure 13: Extension services to farmers

### Financial Inclusion Activity- Savings and Loan

The goal of the financial inclusion activity is to build the financial resilience of vulnerable households through creating easy to access financial services via digital financial tools for safe, affordable and sustainable financing/banking for farmer associations funds through use of mobile money platforms. The Financial inclusion also provides a risk reserve for the farmer group members against household emergencies, economic shocks and for enterprise establishments. Between January 2020 - June 2023, a total sum of **NGN 35,162,246** was saved by members of Nuru Nigeria farmer associations.

Nuru Nigeria also supports the financial inclusion activity through the provision of POS machines and kiosks across all communities of intervention. Based on monitoring data from April to June, 2023; total Profit made by POS agents in this enterprise is at **NGN 1,325,500**.

The profits made by the POS agents from the business enterprise are mostly used to finance farming activities, meet household needs, reinvest into other businesses and support family emergencies (health and school).

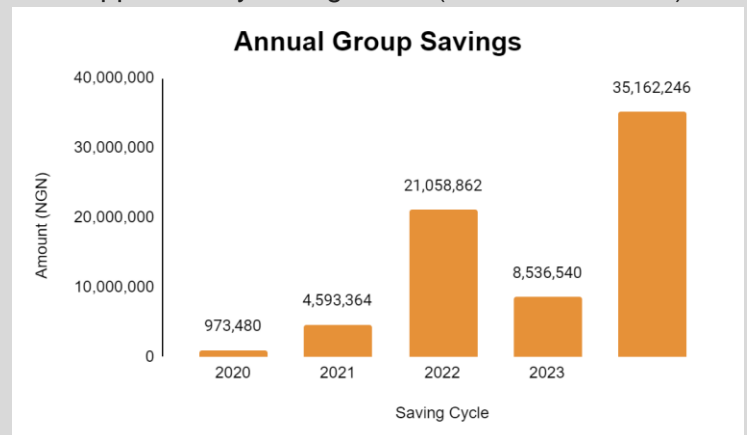


Figure 14: Aggregated Farmer association savings

### Social and Behaviour Change Communication Activity

Nuru Nigeria is implementing a new program area that seeks to complement the agricultural and nutrition sensitive activities to ensure achievement of impact in reducing poverty and vulnerabilities in the lives of smallholder farmers particularly in Hong, Gombi and Delchim in Michika LGA. The Building Sustainable Livelihood (BSL) activity is implementing the Social and Behavior Change Communication activity which seeks to promote behavior change by creating community-wide awareness on good nutritional and health practices and supporting community participants to adopt behaviors that will speed up the strengthening of their resilience capacities. The activity targets women of all categories with special focus on Caregivers, Pregnant and lactating mothers, women with children under age 5 and adolescent girls. The activity is focusing on building the capacity of rural women on 3 key areas which are:

- Nutrition
- Hygiene
- Maternal and Child Health Care

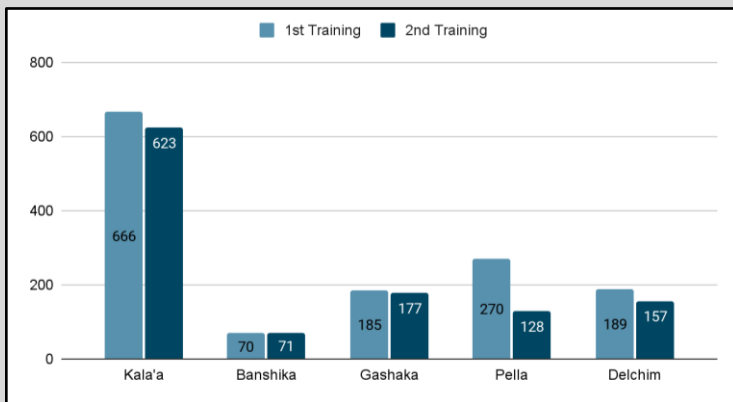


Figure 15: Number of women participating in the SBCC activity

### Nuru Nigeria Contribution to Sustainable Development Goals (SDGs)

The success recorded by Nuru Nigeria on all its program areas is expected to contribute to the United Nations' Sustainable Development Goals (SDGs). Discover the ways in which we leverage our expertise and partnerships to contribute to global impact in 2021.



Nuru Nigeria continues to work tirelessly to achieve its vision for farmers in Northeast Nigeria - to cultivate lasting meaningful choices for vulnerable and marginalized communities in Northeast Nigeria.

Nuru Nigeria implements a comprehensive, multi-faceted approach to address the challenges of agricultural production and productivity, household nutrition, and financial inclusion. The organisation's focus is on improving the livelihoods of smallholder farmers and promoting sustainable agriculture practices to foster resilience and self-reliance amongst recovery communities.

Nuru Nigeria's activities can be summarized to focus on these components:

1. **Agricultural Production and Productivity:** This component focuses on improving the productivity of smallholder farmers through the adoption of modern agricultural practices. The activity continues provide training and technical assistance to farmers on crop selection, soil management, pest and disease control, post-harvest handling, and marketing. The activity also facilitate access to improved seed varieties and train farmers on composing/organic fertiliser making and usage. Nuru Nigeria also provide farmers realtime weather information which supports in decision making especially in rolling out proactive measures that mitigates the impact of Climate Change. This activity is channelled through a group-based approach to increase social cohesion and transformation resilience.
2. **Household Nutrition through Social Behavior Change Communication:** This component focuses on improving the nutritional status of households by promoting behaviour change in food consumption and preparation. The activity uses

Social Behaviour Change Communication (SBCC) strategies to educate households on the importance of a balanced diet, the benefits of consuming diverse food groups, and the importance of hygiene and sanitation. Nuru Nigeria also works with local health facilities to improve the availability and accessibility of health services.

3. **Financial Inclusion:** This component focuses on improving access to financial services for smallholder farmers and households. The activity provides financial literacy training and facilitates access to savings and credit services. It also integrates digital platforms for group savings and loan activities side by side, creating financial service access points within the communities. Nuru Nigeria also works with local financial institutions to develop and promote financial products that are tailored to the needs of smallholder farmers and households.

Through its holistic integrated model Nuru Nigeria has been able to address the needs of farmers and support the attainment of the highlighted SDGs.

**Contact Us**

**For more information about Nuru Nigeria:**

Visit our website: <https://nuruinternational.org/where-we-work/nuru-nigeria/>

Amy Gaman, Executive Director, Nuru Nigeria

Suite B09, Tsukunda House, Plot 1446, Central Business District, Abuja

Email: [info@nurunigeria.org](mailto:info@nurunigeria.org)